

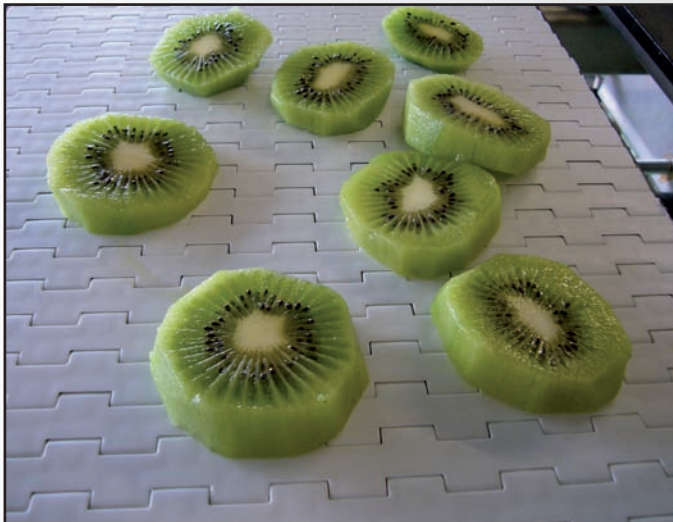
# 1010-SERIES MODULAR BELTS

The 1010-series 1-inch pitch belt is designed to meet the increasing demand from food processing industry for improved hygiene and better cleanable products. It is meant for light to medium duty applications, where cleanability and hygiene have got the highest importance. It can handle meat, poultry, seafood, fruits and salads after being cut or processed otherwise. As a standard the belts are supplied in food-grade materials with antibacterial protection, especially for direct food contact and high-risk areas.

## FEATURES

- When turning over a small roller the hinges open, exposing a large pin surface, offering excellent cleaning possibilities. The hinge design is extremely open and accessible, so a large surface of the pin and the inside of the hinge can be cleaned directly. The bottom of the module is curved, improving drainage and reducing drying time of the belt after cleaning.
- Using a moulded pin with T-shaped head keeps the pin in a specially designed eccentric outer hinge eye. This makes the belt easy to operate for maintenance and cleaning.
- The belt is supplied mould-to-width up to 24 inch, avoiding adjacent surfaces between the modules. The hinges are 1/2 inch wide, reducing the number of adjacent surfaces in-between.
- Fully closed machined sprockets, ideal for cleaning. Due to the double teeth rows the sprockets are bi-directional and easy to position.
- As a standard antibacterial protection incorporated for direct food contact.

PROGRAMME	
1015 Solid Top	Closed surface; it offers the best support to vulnerable products and prevents loss of small products
Belt accessories	Flights to handle bulk food stuff on inclined and declined conveyors. They are ribbed on both sides, improving the release properties against sticky or frozen products. The flights can be positioned until the side of the belt or with a 1-inch side-indent on any pitch required. Other side-indent on request.

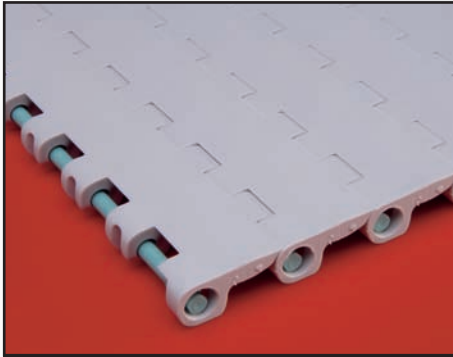


KIWI CONVEYOR WITH 1015 BELT

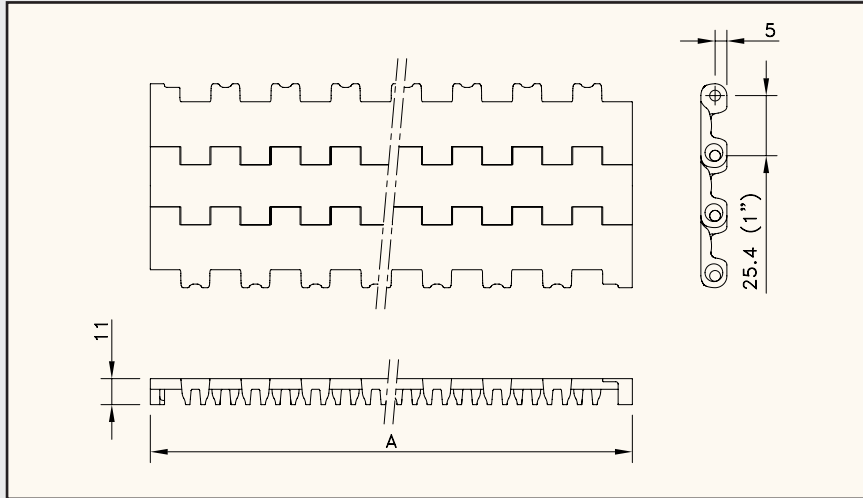


FISH FINGER PROCESSING ON 1015 BELT

# 1010-SERIES



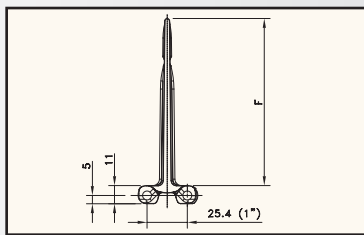
**SOLID TOP  
1015**



**MATERIAL**  
page 208

Assembly	Belt type	Code nr.*	Temperature range °C		Working load (max.) N/m (21°C)	Weight kg/m <sup>2</sup>	Backflex radius (min.) mm
			dry	wet			
<b>ANTIBACTERIAL WLA-POLYETHYLENE WITH POLYETHYLENE PINS</b>							
STANDARD	WLA 1015	846.22.xx	-70 to +35	-70 to +35	5000	4.80	40
<b>ANTIBACTERIAL BLA-POLYETHYLENE WITH POLYETHYLENE PINS</b>							
STANDARD	BLA 1015	846.22.xx	-70 to +35	-70 to +35	5000	4.80	40
<b>ANTIBACTERIAL WHA-POLYPROPYLENE WITH POLYPROPYLENE PINS</b>							
STANDARD	WHA 1015	849.22.xx	4 to 104	4 to 104	6000	4.40	40
<b>ANTIBACTERIAL BHA-POLYPROPYLENE WITH POLYPROPYLENE PINS</b>							
STANDARD	BHA 1015	849.22.xx	4 to 104	4 to 104	6000	4.40	40
<b>ANTIBACTERIAL WSA-ACETAL WITH POLYPROPYLENE PINS</b>							
STANDARD	WSA 1015	844.22.xx	-40 to +80	-40 to +65	12000	7.00	40
<b>ANTIBACTERIAL BSA-ACETAL WITH POLYPROPYLENE PINS</b>							
STANDARD	BSA 1015	844.22.xx	-40 to +80	-40 to +65	12000	7.00	40

\* In code numbers xx corresponds with the belt width (A), for White belts (WLA, WHA, WSA) starting with 00 for 4", 01 for 5", for Blue belts (BLA, BHA, BSA) starting with 50 for 4", 51 for 5" and so on in steps of 1", up to 44". Optionally 1/2" increments are possible up to 24". See also page 206.



If you need flights, describe the belt by choosing the required options listed in the 2nd column of the table

Material	WLA or BLA or WHA or BHA or WSA or BSA	
Belt type	<b>1015</b>	
Width (A)	<b>K.</b> (in inches)	Belts with flights have minimal width of 6"
Flights	<b>RF3 or RF4 or RH..</b>	Ribbed 3 to 4" high flight or special height in mm
Pitch between flights	<b>T..P</b>	Flight on every .. <sup>th</sup> row
Flight side-indent	<b>N0 or N1 or N..</b>	Standard 0 or 1"; non-standard increments of 1/2", starting with 1 1/2"

FLIGHT FOR 1010-SERIES

Sprocket Type	Code nr.	Nr. of teeth	Bore	Pitch diameter	Outside diameter	Hub width
			B mm	E mm	F mm	A mm

**MATERIAL**  
page 209

## CLASSIC SPROCKETS

### ROUND BORES

KU 1010 T10 R40	897.10.33	10	40	82.2	82.7	25
KU 1010 T12 R40	897.10.42	12	40	98.1	98.9	
KU 1010 T16 R40	897.10.71	16	40	130.2	131.5	
KU 1010 T18 R40	897.10.86	18	40	146.3	147.8	
KU 1010 T20 R40	897.11.01	20	40	162.4	164.0	

### SQUARE BORES

KU 1010 T10 S40	897.10.35	10	40	82.2	82.7	25
KU 1010 T12 S40	897.10.44	12	40	98.1	98.9	
KU 1010 T16 S40	897.10.73	16	40	130.2	131.5	
KU 1010 T18 S40	897.10.88	18	40	146.3	147.8	
KU 1010 T20 S40	897.11.03	20	40	162.4	164.0	

