

# 2010-SERIES MODULAR BELTS

The 2010-series 2-inch pitch belts can be used in a large variety of food applications. These belts are used on deboning and trimming lines as well as medium- and heavy-duty elevators. Due to the various executions and the large range of accessories, a tailor-made solution for each food handling application is possible. All 2010-series belt materials are standard equipped with antibacterial protection for direct food contact.

## FEATURES

- The modules are flush all around and do not have closed or hidden pockets. Especially the large open area between the rows of hinge eyes underneath the belt offer very good accessibility for cleaning. The rod retention area is very easy to clean and because of the absence of rims or hidden areas there is no risk of dirt and debris accumulating.
- This belt is very easy to assemble or disassemble, due to the integrated locking system. With a screwdriver the rod retention finger can be positioned in either the 'locked' or the 'unlocked' position.
- The extended hinge eyes underneath the belt provide a large footprint, reducing contact pressure and wear. The connection of the hinge eyes with the top plate is very rigid, giving the belt excellent impact resistance. The large rod diameter also means less pressure and wear reduction in the hinges.
- The design of the sprocket and the belt has been optimised to ensure an excellent drive, up to the maximum working load of the belt during its whole life. The machined sprockets have excellent strength and cleanability.
- As a standard equipped with antibacterial protection.

PROGRAMME	
2015 Solid Top	Closed surface; allows cutting and deboning on the belt surface; it offers the best support to vulnerable products and prevents loss of small products
2016 Perforated Top	20% open area; this allows optimum drainage and airflow in combination with good product support due to the rectangular slots
2011 Textured Top	Small nubs prevent sticking of soft and frozen products and sliding on the belt surface
Belt accessories	Straight, curved and bucket flights and sideguards for elevators and other food applications

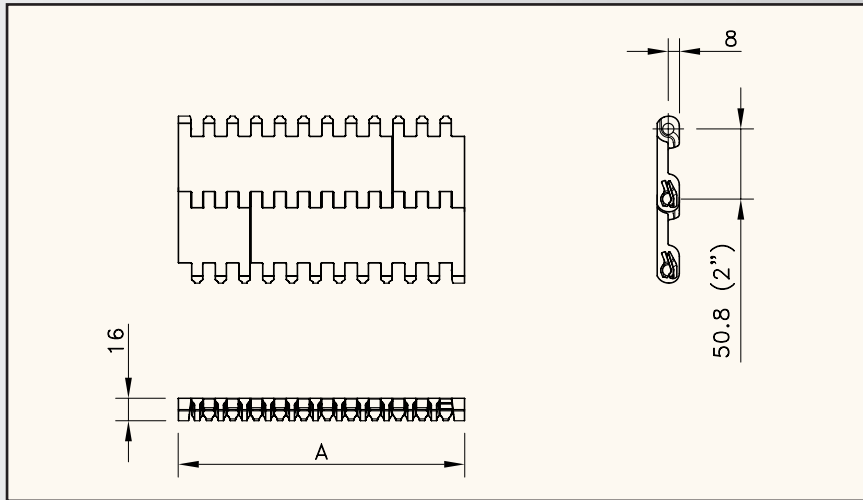
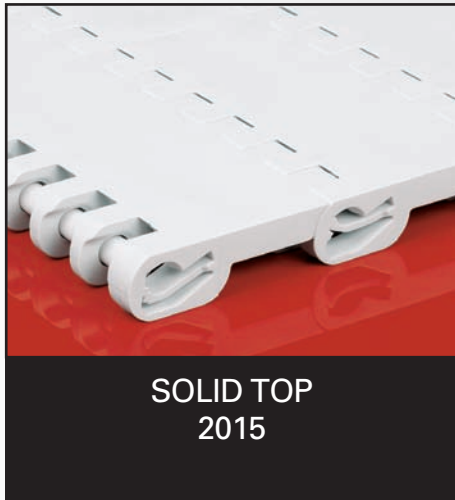


CHICKEN DEBONING LINE WITH 2015 BELT



CONFECTIONARY ELEVATING ON 2015 BELT

# 2010-SERIES

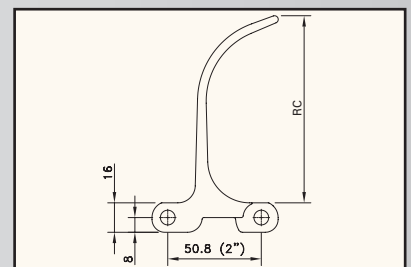
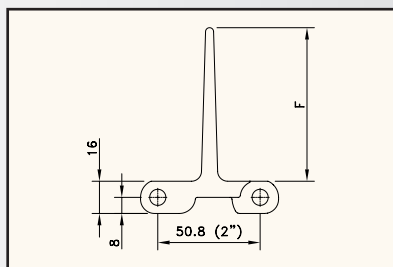


Assembly	Belt type	Code nr.*	Temperature range °C		Working load (max.) N/m (21°C)	Weight kg/m <sup>2</sup>	Backflex radius (min.) mm
			dry	wet			
<b>ANTIBACTERIAL WLA-POLYETHYLENE WITH POLYETHYLENE PINS</b>							
STANDARD	WLA 2015	846.04.10	-70 to +35	-70 to +35	7500	9.50	87
<b>ANTIBACTERIAL BLA-POLYETHYLENE WITH POLYETHYLENE PINS</b>							
STANDARD	BLA 2015	846.05.10	-70 to +35	-70 to +35	7500	9.50	87
<b>ANTIBACTERIAL WHA-POLYPROPYLENE WITH POLYPROPYLENE PINS</b>							
STANDARD	WHA 2015	849.04.10	4 to 104	4 to 104	15000	8.90	87
<b>ANTIBACTERIAL BHA-POLYPROPYLENE WITH POLYPROPYLENE PINS</b>							
STANDARD	BHA 2015	849.03.60	4 to 104	4 to 104	15000	8.90	87
<b>ANTIBACTERIAL WSA-ACETAL WITH POLYPROPYLENE PINS</b>							
STANDARD	WSA 2015	844.03.10	4 to 80	4 to 65	20000	13.60	87
<b>ANTIBACTERIAL BSA-ACETAL WITH POLYPROPYLENE PINS</b>							
STANDARD	BSA 2015	844.02.51	4 to 80	4 to 65	20000	13.60	87

\* Code numbers in the table correspond with 6" wide belts and go up with 1 (e.g. 844.03.11, 844.03.12 etc.) for each standard 2" increment (8", 10" etc.) up to 120". Optionally 2/3" increments possible. See also page 206.  
If you require flights or sideguards, please describe the belt by choosing from the options listed in the 2<sup>nd</sup> column of the table:

Material	<b>WLA or BLA or WHA or BHA or WSA or BSA</b>	
Belt type	<b>2015</b>	
Width (A)	<b>K.. (in inches)</b>	Belts with flights have a minimal width of 8"; smaller upon request
Flights	<b>F1 or F2 or F3 or F4 or H.. F5 or F6 C4 or C6 RF2 or RF3 or RF4 or RH.. RC4 or RC6 B4 or B6</b>	Straight; standard height 1" to 4" or special in mm; all materials available Straight; standard height 5" or 6"; available in WHA, BHA, WLA and BLA Curved; height 4" or 6"; available in WHA, BHA, WLA and BLA Ribbed straight; height 2", 3" or 4" or special in mm; in WHA, BHA and WLA Ribbed curved; height 4" or 6" or special in mm; in WHA, BHA and WLA Bucket flight; height 4" or 6"; available in WHA and BHA
Pitch between flights	<b>T..P</b>	Flights on every .. <sup>th</sup> row
Flight side-indent	<b>N.. (in inches)</b>	Minimal 1 1/3" with 2/3" increments; sideguards are situated at 1/3" from the flight, reducing the indent by 2/3"; if side-indent is 1 1/3", sideguards are directly besides the flight, reducing the indent by 1/3"
Sideguards	<b>SG2 or SG3 or SG4</b>	Standard height of 2", 3" or 4"

Example: BHA 2015 K18 RF2 T6P N4 SG3 is a 2015 Solid Top belt, made of blue polypropylene with Microban, width 18", 2" high straight ribbed flights on every 6<sup>th</sup> row at 4" from the side and 3" high sideguards.



STRAIGHT FLIGHT FOR 2010-SERIES

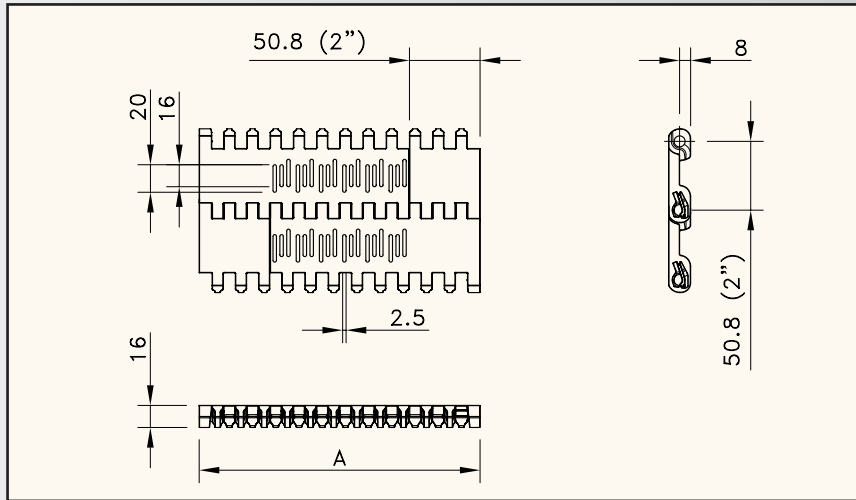
CURVED RIBBED FLIGHT FOR 2010-SERIES

F5 and F6 are Heavy Duty executions. Other material combinations can be supplied upon request.

# 2010-SERIES



**PERFORATED TOP  
2016**



Assembly	Belt type	Code nr.*	Temperature range °C		Working load (max.) N/m (21°C)	Weight kg/m <sup>2</sup>	Backflex radius (min.) mm
			dry	wet			
<b>ANTIBACTERIAL WLA-POLYETHYLENE WITH POLYETHYLENE PINS</b>							
STANDARD	WLA 2016	846.07.00	-70 to +35	-70 to +35	7500	9.50	87
<b>ANTIBACTERIAL BLA-POLYETHYLENE WITH POLYETHYLENE PINS</b>							
STANDARD	BLA 2016	846.09.00	-70 to +35	-70 to +35	7500	9.50	87
<b>ANTIBACTERIAL WHA-POLYPROPYLENE WITH POLYPROPYLENE PINS</b>							
STANDARD	WHA 2016	849.06.00	4 to 104	4 to 104	15000	8.90	87
<b>ANTIBACTERIAL BHA-POLYPROPYLENE WITH POLYPROPYLENE PINS</b>							
STANDARD	BHA 2016	849.04.60	4 to 104	4 to 104	15000	8.90	87
<b>ANTIBACTERIAL WSA-ACETAL WITH POLYPROPYLENE PINS</b>							
MOULD TO ORDER	WSA 2016	844.03.51	4 to 80	4 to 65	20000	13.60	87
<b>ANTIBACTERIAL BSA-ACETAL WITH POLYPROPYLENE PINS</b>							
MOULD TO ORDER	BSA 2016	844.04.10	4 to 80	4 to 65	20000	13.60	87

\* Code numbers in the table correspond with 6" wide belts. Code numbers go up with 1 (e.g. 846.07.01, 846.07.02 etc.) for each standard 2" increment (8", 10" etc.) up to 120". Optionally 2/3" increments possible. See also page 206.

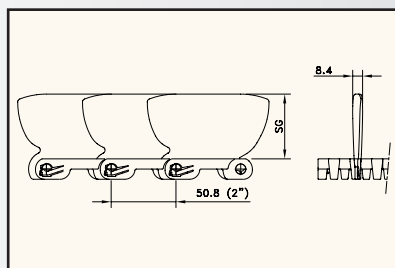
If you require flights or sideguards, please describe the belt by choosing from the options listed in the 2<sup>nd</sup> column of the table:

Material	<b>WLA or BLA or WHA or BHA</b>	
Belt type	<b>2016</b>	
Width (A)	<b>K..</b> (in inches)	Belts with flights have a minimal width of 8"; smaller upon request
Flights	<b>F1 or F2 or F3 or F4 or H.. F5 or F6 C4 or C6 RF2 or RF3 or RF4 or RH.. RC4 or RC6 B4 or B6</b>	Straight; standard height 1" to 4" or special in mm; all materials available Straight; standard height 5" or 6"; available in WHA, BHA, WLA and BLA Curved; height 4" or 6"; available in WHA, BHA, WLA and BLA Ribbed straight; height 2", 3" or 4" or special in mm; in WHA, BHA and WLA Ribbed curved; height 4" or 6" or special in mm; in WHA, BHA and WLA Bucket flight; height 4" or 6"; available in WHA and BHA
Pitch between flights	<b>T..P</b>	Flights on every .. <sup>th</sup> row
Flight side-indent	<b>N..</b> (in inches)	Minimal 1 1/3" with 2/3" increments; sideguards are situated at 1/3" from the flight, reducing the indent by 2/3"; if side-indent is 1 1/3", sideguards are directly besides the flight, reducing the indent by 1/3"
Sideguards	<b>SG2 or SG3 or SG4</b>	Standard height of 2", 3" or 4"

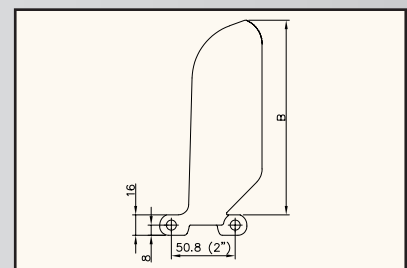
Example: BLA 2016 K10 SG4 is a 2016 Perforated Top belt, made of blue polyethylene with Microban, width 10", no flights and 4" high sideguards.



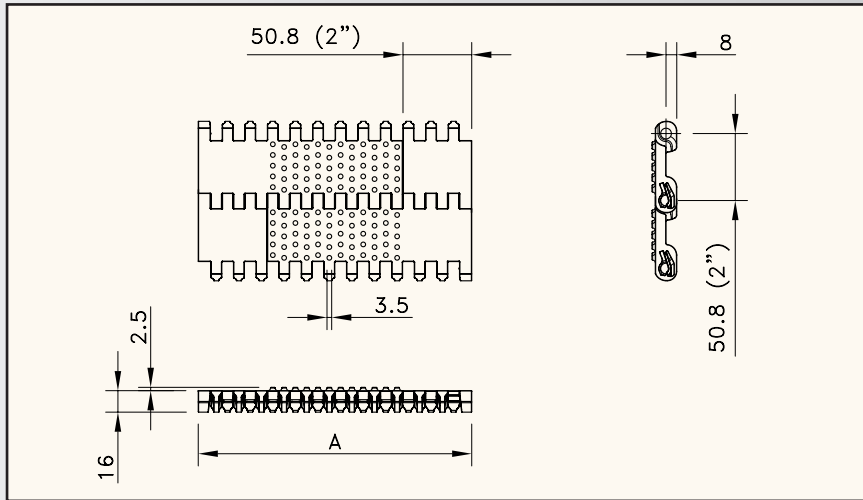
SIDEGUARDS FOR 2010-SERIES



BUCKET FLIGHT FOR 2010-SERIES



# 2010-SERIES



**MATERIAL**  
page 208

Assembly	Belt type	Code nr.*	Temperature range °C		Working load (max.) N/m (21°C)	Weight kg/m <sup>2</sup>	Backflex radius (min.) mm
			dry	wet			
<b>ANTIBACTERIAL WLA-POLYETHYLENE WITH POLYETHYLENE PINS</b>							
STANDARD	WLA 2011	846.07.51	-70 to +35	-70 to +35	7500	9.50	87
<b>ANTIBACTERIAL BLA-POLYETHYLENE WITH POLYETHYLENE PINS</b>							
STANDARD	BLA 2011	846.09.51	-70 to +35	-70 to +35	7500	9.50	87
<b>ANTIBACTERIAL WHA-POLYPROPYLENE WITH POLYPROPYLENE PINS</b>							
MOULD TO ORDER	WHA 2011	849.06.51	4 to 104	4 to 104	15000	8.90	87
<b>ANTIBACTERIAL BHA-POLYPROPYLENE WITH POLYPROPYLENE PINS</b>							
MOULD TO ORDER	BHA 2011	849.02.60	4 to 104	4 to 104	15000	8.90	87
<b>ANTIBACTERIAL WSA-ACETAL WITH POLYPROPYLENE PINS</b>							
MOULD TO ORDER	WSA 2011	844.04.51	4 to 80	4 to 65	20000	13.60	87
<b>ANTIBACTERIAL BSA-ACETAL WITH POLYPROPYLENE PINS</b>							
MOULD TO ORDER	BSA 2011	844.05.00	4 to 80	4 to 65	20000	13.60	87

\* Code numbers in the table correspond with 6" wide belts. Code numbers go up with 1 (e.g. 846.07.52, 846.07.53 etc.) for each standard 2" increment (8", 10" etc.) up to 120". Optionally 2/3" increments possible. See also page 206.  
If you require flights or sideguards, please describe the belt by choosing from the options listed in the 2<sup>nd</sup> column of the table:

Material	<b>WLA or BLA</b>	
Belt type	<b>2011</b>	
Width (A)	<b>K..</b> (in inches)	Belts with flights have a minimal width of 8"; smaller upon request
Flights	<b>F1 or F2 or F3 or F4 or F5 or F6 or H.. C4 or C6 RF2 or RF3 or RF4 or RFH.. RC4 or RC6</b>	Straight; standard height 1" to 6" or special in mm Curved; height 4" or 6" Ribbed straight; height 2", 3" or 4" or special in mm; available in WLA Ribbed curved; height 4" or 6" or special in mm
Pitch between flights	<b>T..P</b>	Flights on every .. <sup>th</sup> row
Flight side-indent	<b>N..</b> (in inches)	Minimal 1 1/3" with 2/3" increments; sideguards are situated at 1/3" from the flight, reducing the indent by 2/3"; if side-indent is 1 1/3", sideguards are directly besides the flight, reducing the indent by 1/3"
Sideguards	<b>SG2 or SG3 or SG4</b>	Standard height of 2", 3" or 4"; indent 1 1/3" or 2", other sizes upon request

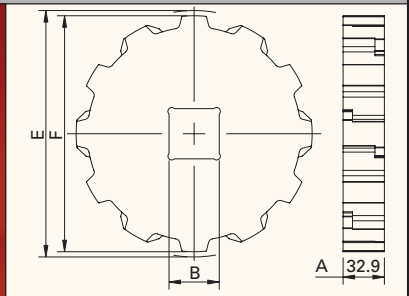
Type	Code nr.	Nr. of teeth	Bore	Pitch diameter	Outside diameter	Hub width
			B mm	E mm	F mm	A mm

**MATERIAL**  
page 209

## CLASSIC SPROCKETS

### SQUARE BORES

CS 2010-6-40x40	897.20.23	6*	40	101.6	87.0	33
CS 2010-8-40x40	897.20.04	8	40	132.8	121.0	
CS 2010-10-40x40	897.20.07	10	40	164.4	154.0	
CS 2010-10-60x60	897.20.10	10	60	164.4	154.0	
CS 2010-12-40x40	897.20.26	12	40	196.3	188.0	
CS 2010-12-60x60	897.20.29	12	60	196.3	188.0	



\* 6 teeth sprockets are not recommended as drive sprockets.